

For your smile

FOYOMED Medical Equipments Instruments

Foyomed[®]

NINGBO FOYOMED MEDICAL INSTRUMENTS CO., LTD.

ADD: 9F, Ningshing Building, No.666 jiangnan Road,
Hi-Tech Zone, Ningbo, China
Tel: 86-574-81877253 Fax: 86-574-81877057
<http://www.foyomed.com> www.foyocare.com
E-mail: sales@foyomed.com

MFLab[®]

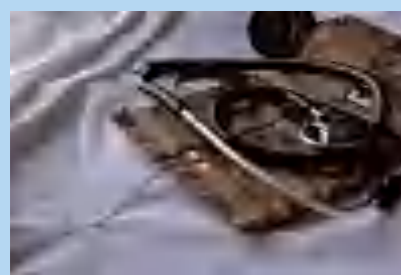
NINGBO MFLAB MEDICAL INSTRUMENTS CO., LTD.

ADD: NO.508, Yindong Road(N), Yinzhou Economic Development Zone,
315145 Ningbo China
Tel: 0574-81877852 Fax: 0574-81877057
<http://www.mflab.com> www.breathcare.cn
E-mail: products@mflab.com breathcare@mflab.com

Foyomed[®]



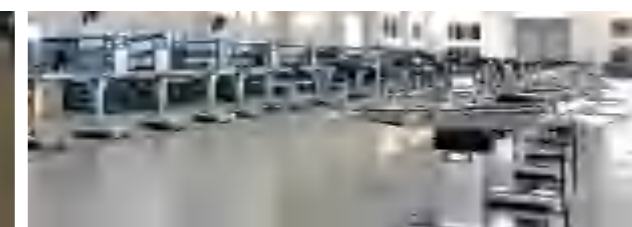
Contents



Examination and Diagnostics Series	P01~18
Weighing Series	P19~22
Rehabilitation Series	P23~32
Outdoor Emergency Series	P33~38
Hospital Facility Series	P39~50
Hospital Equipment Series	P51~61
Surgical Equipment Series	P62~65
Model Series	P66~69
Other Series	P70~72

ABOUT US

»»»» OUR COMPANY



Establishment

FOYOMED is established in the year 2003 as a professional import and export corporation for medical products. It is the headquarters of MFLAB Medical with production area covering 15,500 m². Among it, it is including 100,000 grade purification workshops and cleaning room, totally 9,200 m². There are more than 350 workers in the production line.

Team Work

FOYOMED has a high efficient and professional team, full of wisdom and passion, with more than 20 years of working experience. We take the diligent, professional and responsible spirit, committed to provide customers good products and service.

Export Reputation

Our FOYOMED products have been exported to over 100 countries worldwide through a network of distributors and subsidiaries, covering North American, South American, European, Asian, Oceanian and African countries.

Leading Products

FOYOMED has a wide range of products in business with leading products respiratory products, disposable medical products, medical equipment and laboratory products.

Brands

There are five brands for our FOYOMED: Foyomed, Foyocare, FoyoLab, MFlab and Smilecare in distribution.

Quality System

FOYOMED is the headquarter of MFLAB Medical which audited by TUV Rheinland every year, more than 30 products has got CE certificates issued by TUV Rheinland. MFLAB also passed by GMP, ISO13485, US FDA on-site Audit, Saudi Arabian FDA on-site Audit, Malaysian MOH on-site Audit, Korea MOH on-site Audit.

Principle

We FOYOMED adheres to " For Your Smile" principle to strive to achieve excellent quality, responsible price and first-rate service in operation, and cherish every business opportunity.

**Examination and
Diagnostics Series**

FYD021001

Single Head Stethoscope

Diaphragm only chestpiece
 Lightweight aluminum chestpiece construction
 Ideally suited for blood pressure measurement
 Proprietary diaphragm enhances acoustic response
 Adjustable aluminum binaurals with PVC eartips b 50% over traditional designs
 Flexible 21 pvc tubing
 Adult model diameter of head:46mm
 Child model diameter of head:33mm



FYD021002

Colored Single Head Stethoscope

Lightweight aluminum chestpiece construction
 with color-matched PVC Y-tubing



FYD022001

Double Head Stethoscope

Lightweight aluminum chestpiece construction
 Adjustable aluminum binaurals with PVC eartips
 Flexible 21 pvc tubing
 Adult model diameter of head:47mm
 Child model diameter of head:33mm
 Note: Y tube has many colors, which can be drawn according to the color card.



FYD022002

Colored Double Head Stethoscope

Attractive colored head with color-matched PVC Y-tubing



FYD022008
Stainless Steel Stethoscope

Stainless Steel Chest Piece
Stainless Steel Binaural
Plastic & soft eartips
With non-chill rims
Spare diaphragm included
All kinds of color available for the tube such as:
Black, Red, Green, Blue, Pink, Grey, etc.



FYD022012
Stainless Steel Stethoscope

Stainless Steel electroplated Chest Piece
Electroplated Binaural
Suitable for clinical examination



FYD022013
Clinician Stethoscope

Combination diaphragm/ bell adult chestpiece precisely machined to exacting tolerances from surgical stainless steel for outstanding performance and rugged durability.
Extra large bell for unsurpassed low frequency response.
Ultra-sensitive diaphragm for greater amplification and crisper high frequency response.
Non-chill bell and diaphragm retaining rims for patient comfort.
Clinician headset boasts reinforcing yoke molded into the flexible 22" PVC tubing and stainless steel binaurals fixed at 15.
(angle for greater comfort (Tactical model with aluminum binaurals)
Threaded metal core PVC for the ultimate in wearing comfort and acoustic seal.
Includes accessory kit with spare diaphragm, extra soft and standard eartips.
Black/Gold-plated chestpiece and binaural.



FYD022005
Newborn Stethoscope

Chrome-plated binaural and PVC tubing
Zinc alloy newborn chestpiece



FYD022010
Cardiology Stethoscope

Stainless steel chestpiece, excellent sound conduction
Considerate dual anti-chill ring design
Adult or pediatric use.



FYD022014
Sprague Rappaport Stethoscope

Sprague Rappaport type chest piece
Brass Chrome Plated Binaural
Plastic or soft eartips
All kinds of color available for the tube such as:
Black, Red, Green, Yellow, Blue, Purple, Pink, Grey



FYDP02001
Stethoscope Head



Aneroid Sphygmomanometer

Measure scope: 0-300mmHg
 Accuracy: +/-3mmHg
 Sub-division: 2mmHg
 Cotton or Nylon Cuff is Available
 With or Without D-ring is Available
 Artery label
 Vinyl or Nylon Zippered Carrying Case

FYD011002

Aneroid Sphygmomanometer
 with Separate Single Head Stethoscope



FYD011005

Palm Type Aneroid Sphygmomanometer
 Metal Shell
 60mm Diameter Dial
 Version for Left-handers also Available



FYD011015

Five Size Blood Pressure Kit
 1pc Palm Type Aneroid Sphygmomanometer Gauge
 5pcs Sizes Cuff With Latex Baladder & Quick Release Luer adapter:
 1pc Infant Cuff: 28cm x8cm
 1pc Child Cuff: 34.5cm x11cm
 1pc Adult Cuff: 50.8cm x14cm
 1pc Large Cuff: 63cm x17.5cm
 1pc Thigh Cuff: 72cm x21cm
 1pc Penlight
 1pc Dual head Stethoscope
 1Pc Neurological Hammer
 1Pc Nylon Carrying Case
 Form of packing: 10pcs/carton
 Size of packing: 600x420x300mm

FYD01009

Palm Type Aneroid Sphygmomanometer
 Plastic Shell
 65mm Diameter Dial



Mercury-Free Sphygmomanometer

Specification:

Measure unit: mmHg
 Numerical display: 1mmHg
 Measure method: stethoscope
 Measure scope: 0-300mmHg
 Available discrepancy: +/-3mmHg
 Pulse rate: 30-200m, +/-5%
 Pressurization: manual by bulb
 Depressurization: Manual by air release valve
 W/O D-ring nylon cuff with silk printing
 PVC bladder and bulb



FYD011016

Stand Type
 Aneroid Sphygmomanometer
 Aluminum column adjustable from 80-125cm
 ABS plastic gauge
 Plastic base plate with 5 castors with brakes

FYD011017

LCD Mercury Free Sphygmomanometer
 Minimal scale: LCD
 Column: 2mmHg
 Power Supply: 4.5V, AA*3



FYD011021

Minimal scale: LCD column: 2mmHg
 Power supply: 3V, AA*2
 Steel tube, spring tube 2m
 Iron base plate with 5 castors with brakes
 Adjustable from 105cm to 146cm



FYD011018

LED Mercury-Free Sphygmomanometer
 Minimal scale: LED
 Column: 2mmHg
 Power supply: 4.5V, AA*3





FYD011019
Mercury-Free Sphygmomanometer

LCD Mercury Free Sphygmomanometer
(Portable Blood Pressure Machine)
Minimal scale: LCD
Column: 2mmHg
Power supply: 3V, AA*2



FYD011014
Mercury-Free Sphygmomanometer

Wall Type Aneroid Sphygmomanometer
With 2 meter PVC tube
PVC bladder and bulb



FYD012008
Upper Arm Blood Pressure Monitor

Measure on inflation
Arm shake indicator
Cuff loose indicator
Talking optional
Backlight optional
Irregular heartbeat detection
Average last 3 results optional
Blood pressure risk indicator
Automatic power-off



FYD012009
Upper Arm Blood Pressure Monitor

Talking optional
Backlight optional
Digital error messages
2x60 memories with date and time
Large display
Deluxe carry case
AC adapter port or Type-C
Automatic power-off

Accessoire



FYDP01002
Cuff



FYDP01012
Bulb



FYDP01007
Bllder



FYD012010
Upper Arm Blood Pressure Monitor

Measure on inflation
Arm shake indicator
Cuff loose indicator
Bluetooth optional
Talking optional
Backlight optional
Irregular heartbeat detection
Average last 3 results
Blood pressure risk indicator
2x150 memories with date and time
Automatic power-off



FYD012011

- Latest one piece design
- Measure on inflation
- Arm shake indicator
- Cuff loose indicator
- Bluetooth optional
- Lithium battery optional
- Talking optional
- Backlight optional
- Irregular heartbeat detection
- Average last 3 results
- Blood pressure risk indicator
- 2×150 memories with date and time
- Automatic power-off

FYD012001

- Backlighting in 3 different colors
- Intelligent inflation
- Universal Cuff 22 -42cm
- LCD Backlight display
- 90 sets of memory
- Battery: AAA*4



FYD012012

Wrist Blood Pressure Monitor

- Blood pressure result indicator
- Digital error messages
- Large display
- Irregular heartbeat detection
- Talking optional
- 2×60 memories with date and time
- Includes carry case
- Average last 3 results
- Automatic power-off

FYD012013

Wrist Blood Pressure Monitor

- Slim design
- Measure on inflation
- Position indicator
- Bluetooth® optional
- Backlight optional
- Talking optional
- Large display
- Blood pressure risk indicator
- Average last 3 results
- 2×150 memories with date and time
- Low battery detection
- Automatic power-off



FYD061005

Blood Glucose Monitor

- Product size: 86.2*54*20.5 mm (L*W*H)
- LCD Size: 34.6*31.1 mm (L*H)
- Product Weight: Approximate 41.2g, battery not included
- Testing Time: 5 seconds
- Power source: one 3.0V CR2032 button battery, replaceable
- Battery Life: Approximately 1,000 tests
- Memory: 360 blood glucose results with date and time
- Measuring range: 2.2-33.3 mmol/L (40~600 mg/dL)



FYD061006

Blood Glucose Monitor

- Product size: 90*61*23.6 mm (L*W*H)
- LCD Size: 35.4*30.9 mm (L*H)
- Product Weight: Approximate 51.6g, battery not included
- Testing Time: 5 seconds
- Power source: one 3.0V CR2032 button battery, replaceable
- Battery Life: Approximately 1,000 tests
- Memory: 360 blood glucose results with date and time
- Measuring range: 0.5-33.3 mmol/L (9~600 mg/dL)



FYD061007

Blood Glucose Monitor

- Product size: 94.9*56.5*22.8 mm (L*W*H)
- LCD Size: 35.4*30.9 mm (L*H)
- Product Weight: Approximate 50g, battery not included
- Testing Time: 5 seconds
- Power source: 2×AAA alkaline batteries, replaceable
- Battery Life: Approximately 1,000 tests
- Memory: 360 blood glucose results with date and time
- Measuring range: 0.5-33.3 mmol/L (9~600 mg/dL)



FYD101001

Oximeter

- Main Features:**
- SpO2 value display
 - Pulse rate value display, bar graph display
 - Pulse waveform display
 - The display mode can be changed
 - Screen brightness can be changed
 - Low-voltage indication: low-voltage indicator appears before working abnormally which is due to low-voltage.



FYD101007

Oximeter

Major Features

1. SpO2 value display
2. Pulse rate value display, bar graph display
3. Pulse waveform display
4. The display mode can be changed
5. Screen brightness can be changed
6. Voice prompt for over-limit and low battery(optional)
7. PR sound indication(optional)
8. Low-voltage indication: low-voltage indicator appears before working abnormally which is due to low-voltage
9. Automatically power off function: when the device is under the state of measuring interface . it will automatically power off within 5 seconds if the finger falls out of probe



FYD091002

Fetal Doppler

Features:

1. High sensitive ultrasound.
2. Detect hear rates of 12h week fetus.
3. Automatic Shutdown after 1 minute without operation.
4. Built-in loudspeaker.

Display	Backlight LCD Display
Ultrasound Frequency	3.0MHz
FHR Modes	Real-time, Average and Manual
Dimension	133x85x31mm
Battery	Rechargeable batter(optional: AA Battery x 3)
Accessories	User manual, Battery



FYD091003

Fetal Doppler

Features:

1. High sensitive ultrasound & Interchangeable waterproof probe.
2. Detect the heart rates of 12th week fetus.
3. Built-in Loudspeaker.

Display	Backing LCD Display
Ultrasound Frequency	2.5MHz
Dimension	215x200x68mm
Battery	Rechargeable battery(Optional: AA Battery x 2)
Accessories	User Manual, Adapter, Battery



FYD032023

Flexible Tip Thermometer

- Beeps
- Flexible tip
- Fever alarm
- Waterproof
- Last reading recall
- Dual scale with °C/°F
- 10s/20s/30s response time
- Automatic power-off



FYD032022

Rigid Tip Thermometer

- Beeps
- Rigid tip
- Fever alarm
- Waterproof
- Last reading recall
- Dual scale with °C/°F
- 10s/20s/30s response time
- Automatic power-off



FYD032024

Rigid Tip Thermometer

- Beeps
- Fever alarm
- Waterproof
- Last reading recall
- 60s response time
- Dual scale with °C/°F
- Low battery indicator
- Automatic power-off



FYD032025

Digital Thermometer

- Beeps
- Flexible tip
- Fever alarm
- Waterproof
- Last reading recall
- Dual scale with °C/°F
- 10s/20s/30s response time
- Automatic power-off

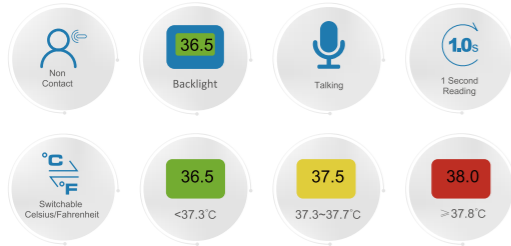


FYD032027

Infrared Forehead Thermometer

Features

- Measure on forehead
- Non-contact
- 30 reading memories
- 1 second reading
- Dual scale with °C/°F
- Beeps
- Backlight oponal
- Talking oponal
- Replaceable baery
- Automac power-off

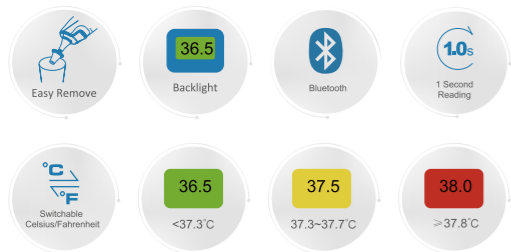


FYD032028

Infrared Ear Thermometer

Features

- Measure in ear
- 30 reading memories
- 1 second reading
- Dual scale with °C/°F
- Fashionable test buon light
- Beeps
- Probe covers oponal
- Easy probe cover remove design
- Backlight oponal
- Bluetooth oponal
- Replaceable baery
- Automac power-off



FYDP03002

Thermometer Probe Covers

For Clean and Hygienic Use



FYD031001

Mercury-Free Glass Thermometer

Glass
Scale: °C Or, °C & °F
Accuracy: ±0.1°C(±0.2 °F)
White back, Yellow back or Blue Back
Armpit Use

FYD121002

Examining Light

Light Intensity: 70,000 Lux (D=30cm) / 40,000 Lux (D=50cm)
Control System: touchless control and switcher intergrated in the handle
Flexiable arm: 76cm length flexiable plastic sleeve goose neck
Lamphead: Diameter=75mm length =110mm
Diameter of Light Spot: 80-150mm (D=30-50cm)
Light source: 1 x LED bulb
LED life span: 50,000 hours
Color Temperature: 4500K - 5500K
Input Connected Load: 100-260V 50/60MHZ
Power consumption: 3W
Class of Protection: Class II
Mounting Options: Mobile, Table, Wall& Rail



FYDP03003

Ear Thermometer Probe Covers

Fit for All Braun Ear Thermometers





FYD081002
Luxurious Eyesight Lamp Box

This is served as an apparatus for eyesight examination. Soft and comfortable lighting levels and being made of aluminum materials, It has a very handsome appearance. There are three styles available—desktop style, wall style and hanging style.
Main technical data:
Power Voltage: AC 220V ± 10%
Frequency: 50Hz
Power: 60W



FYD051001
Diagnostic Pen Light



FYD051002
Diagnostic Pen Light



FYD041001
Buck Neurological Hammer

Hammerhead: Zinc alloy with rubber plug
Handle: Nylon
With needle: Zinc alloy, with brush
Length of hammer: 22.5cm
Height of hammer head: 8.5cm



FYD041002
Gear Wheel Hammer

Hammerhead: Zinc Alloy
Handle: Zinc Alloy



FYD041003
Taylor Hammer

Length of Handle: 18cm
Size of Runner Plug: 5 x 4.3 x 1cm
Thickness of Rubber Plug: 1.5cm



FYD041006
Colorflex Reflex Hammer

Hammerhead: Rubber with copper ring
Handle: Nylon
Length of hammer: 22.5cm
Height of hammerhead: 7.5cm



FYD071009
ENT For Fiber Optic Otoscope & Direct Ophthalmoscope

- Secification:
1. One Chargeable Otoscope & Ophthalmoscope
 2. Double Charger
 3. Gift Box Size: 206*173*88mm
 4. Carton Box Size: 460*390*330mm/12Boxes



FYD071010
Integrated Diagnostic System

- Fiber Optic Otoscope
- Direct Ophthalmoscope
- Tip Dispenser (with disposable tips)
- Infrared thermometer
- Insufflation Bulb
- Sphygmomanometer
- Customize your wall set to match your individual needs



FYD071001
ENT Kit

- Ophthalmoscope 1
- Otoscope carrier 1
- Ear specula(3,4,5,6mm diam) 4
- Dilating Nasal speculum 1
- Laryngeal mirror 3
- Tongue depressor plastic 1
- Battery handle 1
- Spare Bulbs(2large, 4small) 6



FYD071002
Professional Otoscope

Features:
Fiberoptics for cool, obstruction free light transmission
Otoscope head made from polymid - an impact resistant space age thermoplastic Swivelling viewing window with 2.5x magnification
"AA" polycarbonate battery handle interchanges pocket clip with intergral on/off slide switch for ambidextrous use
Technical Data
Magnification: 2.5x
Distal dia.: 2.5mm, 4mm
Bulb: 2.5V 1.6W halogen lamp
Batteries: two "AA" Batteries or two "AA" NiMH Rechargeable Battery



FYD071003
Otoscope

Deluxe packing:
Penlight, Part of otoscope, batteries



FYD071004
Reflex Hammer Gifts Set

Buck Neurological Hammer
Babinski with telescoping handle
Taylor Hammer



FYD132001
Lead Cap

Size:Universal



FYD135001
Lead Collar

Size:Universal



FYD071006
Buck Neurological Nammer

Gear wheel hammer
Taylor Hammer
Gristletly hammer



FYD071008
Fiber Laryngeal Mirror

Power supply: 1.5V X 2 "C" Type
Bulb: 2.5V/0.35A
Blades: 92, 114, 134mm



FYD131001
X-ray Protective Clothing

Size:1000*600mm



FYD131002
Lead Apron

Size:1000*600mm



FYD133001
Lead Gloves

Size:Universal



FYD134001
Lead Glasses

Weighing Series



FYW012007

Bathroom Scale

Unit: KG/LB
Screen: 7.4*2.9cm with backlight
Material: Tempered Glass + ABS Plastic
Battery: 2*AAA
Capacity: 180KG/D=50g
Color: Customized Color
Pattern Type: silk-screen
Thickness of glass: 5mm
Glass R-Angle: R20
Auto On/Auto Off
can be customized



FYW012008

Body fat scale with APP and Bluetooth

Unit: KG/LB
Screen: 74*29mm
Material: Tempered Glass + ABS Plastic
Battery: 2*AAA
Color: Customized Color
Pattern Type: silk-screen
Thickness of glass: 5mm
Glass R-Angle: R20
can be customized



FYW032001

Electronic Infant Scale

Max. Weighing: 20kg

FYW031001

Baby Scale

Max. Weighing: 20kg

**FYW032002****Electronic Infant Scale**

Max. Weighing: 20kg
Min. Value per division: 50g

**FYW032004****Electronic Baby Scale**

Size: 65*32*4.5cm
Max. Weighing: 30kg
Graduations: 2g
LCD Display, Auto Power off, Low battery indicator
Batteries: 7 X AA(not included) or USB

**FYW031002****Portable Hanging Pediatric Scale**

Max. Weighing: 25kg

**FYW011001****Health Scale**

Max. Weighing: 120kg

**FYW011003****Health Scale**

Max. Weighing: 200kg

**FYW012001****Electronic Body Scale**

Max. Weighing: 200kg
Division: 100g
Display: LED
Power: AC/DC
Height range to be measured: 800 - 2100mm
Min value of height per division: 5mm
G.W.: 15KG N.W.: 13kg
Measurement: 100x32x26cm

**FYW012003****Ultrasonic Height Weight Scale**

Overall Size:33 (L)*46 (W)*230 (H)cm
Height Range :60-200cm (Division:0.5cm)
Weight Range :8-200kg (Division:0.1kg)
Working Voltage :AC100-240V
N.W./G.W.:20kg/ 25kg
Packing Size :
124*25*26cm (carton 1)
54*40*22cm (carton 2)

FYW012004**Ultrasonic Height Weight Scale**

Height range:0-200cm,Devison:0.1cm
Weight range:1-500kg, Devison: 0.1kg
Blood pressure:0-299mmHg(0-39.9kpa)
HR range:40-180beats/minute
Fat range:5.0%-50.0%, Devison:0.5%
Basal metabolism:385Kcal-5000Kcal
Body Temp. range:34.0°C-43°C ,Devison:0.1°C
Power:≤45W
Work voltage:AC100-240V, 50Hz
SpO2 range: 70-100%
Body composition: total 17 items including body fat, water, basa
Body composition: total 17 items including body fat, water, basa
Display: display operating steps and measurement results during measuring and ad photos in standby mode.
Data: Upload to computer through RS-232 serial por or to phone through Bluetooth or WIF (optional)
Product weight: net weight: 45kg, gross weight: 50kg
Dimensions: MAX:43(L)x61(W)x240(H)cm

**FYW041001****Height Measuring Rod**

Height range to be measured: 0-2000mm
Min value of height per division: 1mm
Measurement: 35.5×19×19cm /20pcs
G.W.: 4kg N.W.: 3.6kg

Rehabilitation Series



HOT

FYR011002
Steel Wheelchair
Chromed Steel Frame
Fixed Armrest, Fixed Footrest
Solid Castor, Solid Rear Wheel



FYR011016
Aluminum Wheelchair
Aluminum chair frame,
flip-up armrest with height adjustable armrest pad
detachable footrest,
quick released PU rear wheel



FYR012005
Power Wheelchair
Power standing wheelchair 4 position modes:
seating/elevating/reclining/standingstrong
body/waist/knee supportin standing position.

MAIN PARAMETERS

MEASUREMENTS(cm) MODEL NO.										
	(Kg)	DIM	NW/GW							
FYR011002	64	46	58	20	49	87	100	94X23X89	16.7	19
FYR011016	66	46	52	15	52	90	100	75X33X89	23	25
FYR012005	65	43	35	35	56-69	133	100	118X71X86	143	179

FYR012003

Power Wheelchair

Aluminum power wheelchair, fixed armrest, flip-up footrest, foldable back, 15AH lithium battery, 200W motor, 8" PU front castors, 12" PU rear wheels, net weight only 25KGS.



FYR011011

Reclining Wheelchair

Cerebral palsy wheelchair, aluminum chair frame, reclining back, tilting seat, elevating footrest, detachable armrest, x shape seat belt providing body support, 20" self-propelling rear wheel.



FYR031014

Commode Wheelchair

Aluminum chair frame, PU commode seat, Flip-up armrest, Detachable footrest, Solid castor, Pneumatic rear wheel.



FYR031013

Shower Chair

Alumium frame, Flip up armrest, Flip up forest, U shape shower seat.



FYR031009

Bath Bench

Bath Bench
Material: Aluminum,
Length:53cm, Width:51cm, Height:72-85cm,



FYR031008

Shower Chair

Foldable aluminum frame,
Plastic seat,
Lockable front castor.



FYR031001

Commode Chair



FYR021003

Walking Aid



FYR021004

Walking Aid



FYR021009

Walking Aid



FYR021005

Walking Aid

MAIN PARAMETERS

MEASUREMENTS(cm) MODEL NO.									
FYR012003	63	46	30	20	49.5	91	75	80X40X77	26.4 30.9
FYR011011	54	32-38	38	15	48.5	93-113	75	77X40X95	23 25
FYR031014	65	46	58	15	48	93	100	80X35X71	15 17.4

MAIN PARAMETERS

MODEL NO.							G.W. (Kg)
FYR021004	47	46	78-96	53x17x81	4.8	2	5.7
FYR021003	47	47	78-96	53x17x81	5.1	2	6.2
FYR021009	68	46	78-90	61x23x86	7.4	1	9.0
FYR021005	39	62	51-61	52.5x22x63	2.9	2	3.9
FYR021001	46	44	60-75	46x22x70	11.5	2	12.5
FYR031008	75	44	88	67x29x53	5.9	1	7.0
FYR031009	51	53	72-85	56x52x52	8.2	2	8.2
FYR031013	63	48	85	104x24x52	4.7	1	5.9

For your smile

Tel: 0086-574-81877257 Fax: 0086-574-81877057
http://www.foymed.com www.foycare.com

Walking Stick



FYR041001



FYR041002 FYR041003



FYR041004



FYR041005



FYR041008

FYR041006

FYR041007



FYR041009



FYR041010



FYR041011



FYR041012

MAIN PARAMETERS

MODEL Number	HEIGHT (cm)	N.W. (Kg)	□ (Cm)	P C S CN	G.W. (Kg)
FYR041001(L)	128-148	0.9	132x33x29	20	19
FYR041001(M)	116-136	0.85	119x33x29	20	18
FYR041001(S)	103-123	0.8	103x33x29	20	17
FYR041005	82-92	0.3	64x29x16	20	7
FYR041002	77.5-100	0.3	79x29x18	20	7
FYR041004	120	0.3	35x20x26	40	13
FYR041003	77.5-100	0.35	79x34x19	20	8
FYR041006	89	0.3	94x28x15	20	7
FYR041010	72. 5-95	0.9	79x34x43	10	10
FYR041011	72. 5-95	0.9	60x28x47	10	10
FYR041009	65-87. 5	0.8	79x34x43	10	9
FYR041008	68. 5-91	0.3	65x28x15	20	7
FYR041007	68. 5-91	0.3	65x28x15	20	7
FYR041012	80-102. 5	0.9	60x28x47	10	10



FYR061004

Rigid Cervical Collar
Size: S, M, L



FYR061003

Soft Foam Neck Brance

Size: S, M, L



FYR061002

Cervical Collar
Unfolded Size(LxWxH): 54x13x0.5cm
Self Weight: 0.1kg
Packing: 40pcs /61x45x 39cm
G.W.: 6kg



FYR061001

Cervical Collar

Unfolded Size(LxWxH): 59x19x0.5cm
Self Weight: 0.2kg
Packing: 40pcs /59x43x 27cm
G.W.: 7kg



FYR061008

Adjustable Cervical Collar
(Pediatric and Small Adult)
12settings



FYR061007

Adjustable Cervical Collar
(Adult)
16settings



FYR081005
Specimen Collection Pan
PE Material, 1000cc
Size: 32x21x10cm
60g



FYR091001
Plastic Bed Pan
PP Material
Size: 36.5x28x10.6cm
180g



FYR091005
Paper Pulp Bedpan
Newspaper, 1500ml/1800ml
Size: 35x30x41/35x30x49cm
50g



FYR091002
Bedpan Fracture
Size: 32x23.8x8.5cm
PP Material



FYR091007
Sitz Bath Irrigator
W/Graduated PVC Bag
Size: 37.5x36x11.7cm
Color: Rose
1000ml



FYR091006
Sitz Bath
Size: 36.5x37x13cm
Color: Blue/White
2000ml



FYR081011
Male Urinal With Lid
Size: 12x9x25cm
1000ml, PE bottle, PP cap



FYR081017
Unisex Disposable Urinal
Size: 11x10.5x20.5cm
1000ml, PE bottle, PP cap



FYR081012
Female Urinal
PP Material
1000ml



FYR091014
Plastic Surgical Bowl



FYR091015
Plastic Surgical Bowl



FYR091004
Fracture Bedpan w/Lid



FYR081018
Screw Cap Urinal
Size: 9.5x12.5x24.5cm
1000ml, PE bottle, PP cap



FYR081019
24 Hours Urinal Collector
Size: 12x12x29cm
3000ml, PE bottle, PP cap



FYR081020
24 Hours Urinal Collector
Size: 13.5x13.5x26.3cm
3200ml, PE bottle, PP cap



FYR091011
Admission Kit-Male

Admission Kit-Male List

1. Washbasin rectangular 7.5g
2. Standard Pitcher
3. Tumbler 8oz
4. Basin Emesis 9"
5. Soap Dish
6. Rectangular Tray
7. Fracture bedpan
8. Urinal Male with clear lid

Item#	Color	Pkg.	Master Carton Size	G.W.(kgs)	CBM
Admission kit	Blue	4 sets/cs	52.5x34x37.5(cm)	2.8	0.067



FYR091012
Admission Kit-Female

Admission Kit-Female List

1. Washbasin rectangular 7.5g
2. Standard Pitcher
3. Tumbler 8oz
4. Basin Emesis 9"
5. Soap Dish
6. Rectangular Tray
7. Fracture bedpan

Item#	Color	Pkg.	Master Carton Size	G.W.(kgs)	CBM
Admission kit	Rose	4 sets/cs	52.5x34x37.5(cm)	2.2	0.067



FYR091008
Plastic Graduated Kidney Basin
PP Material
Size: 25x10x4.9cm
25g



FYR091009
Paper Pulp Kidney Basin
Newspaper
Size: 26x10x4.9cm
23g



FYR091010
Paper Basin
Newspaper
Size: 23x18.5x5cm
50g



FYR071009
Lumbar Support



FYR071010
Lumbar Support



FYR071011
Lumbar Support

Compression Stocking



FYR071016



FYR071018



FYR071017



FYR071019



FYR071008
Wrist Support



FYR071015
Knee Brace



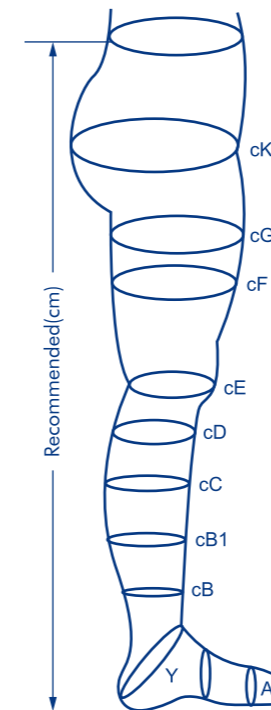
FYR071014
Ankle Brace



FYR071013
Arm Sling



FYR071012
Arm Sling



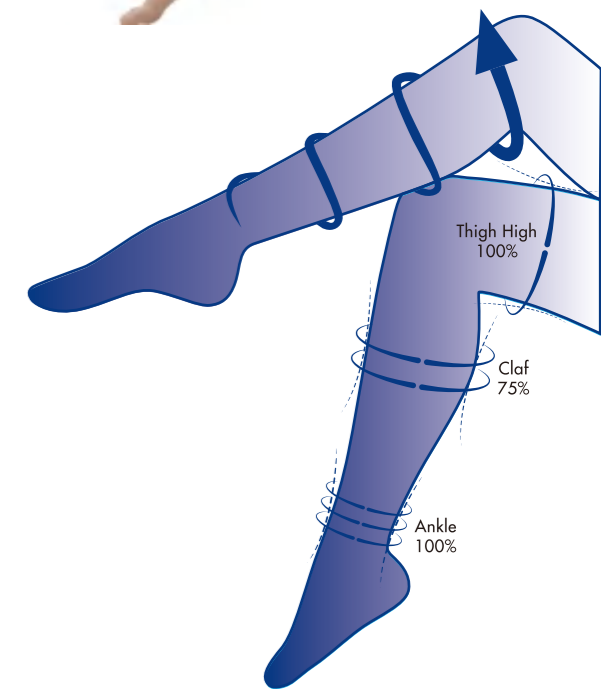
Recommended(cm)

Size Chart	S	M	L	XL
cB	18-22	23-25	26-28	29-32
cB1	24-28	29-31	32-34	35-37
cC	30-34	33-37	36-40	39-44
cD	29-33	32-36	35-39	38-43
cE	34-38	37-41	40-44	43-48
cF	41-47	46-52	51-56	55-61
cG	49-55	54-60	59-64	63-70

Pressure Type Level

Pressure Type Level	Point B	
	hPa	mmHg
Level I	20~28	15~21
Level II	31~43	23~32
Level III	45~61	34~46

1) Measure the pressure value on the cylindrical foot model
2) 1mmHg=1.333hPa



**Outdoor
Emergency Series**



**FYE011018
Spine Board**

Unfolded Size(LxWxH): 184x45x6cm
Self Weight: 8kg
Load Bearing: 160kg
Packing: 1pc/carton,
Carton size: 187x48x7cm
G.W.: 10.5kg



**FYE011020
Spine Board**

Unfolded Size(LxWxH):138X35X6cm
Self Weight: 4Kg
Load Bearing: 79Kg
Packing: 1pc/ctn
G.W.:10Kg



**FYE011005
Four-fold Stretcher**

Unfolded Size(LxWxH):186X48X22cm
Floded Size(LxWxH):50X18X47 cm
Self Weight: 7.2Kg
Packing: 3pcs/carton



**FYE011007
Foldaway Stretcher**

Unfolded Size(LxWxH):215X54X15cm
Folded Size(LxWxH):108X17X9cm
Self Weight: 5Kg
Load Bearing: 159Kg
Packing: 2pcs/110x20x13cm
G.W.:10Kg



**FYE011011
Scoop Stretcher**

Unfolded Size(LxWxH):214X42X70cm
Floded Size(LxWxH):167X42X70 cm
Self Weight: 8.5Kg
Load Bearing: 159Kg
Packing: 1pc/170x43x90cm



FYE011024
Staircase Stretcher

Unfolded Size(LxWxH):70X52X91cm
 Folded Size(LxWxH):90X54X17cm
 Self Weight: 10Kg
 Load Bearing: 159Kg
 Packing: 1pc/94x58x18cm



FYE011014
Basket Stretcher

Unfolded Size(LxWxH): 218x64x18cm
 Folded Size(LxWxH): 123x64x22cm
 Self Weight: 18kg
 Load Bearing: 270kg
 Packing: 1pc/carton
 Carton size: 130x68x31cm
 G.W.: 25.0kg



FYE021012
Stretcher for Ambulance Car

High position (LxWxH) : 190x58x84cm
 Low position (LxWxH) : 190x58x26cm
 Maximum Angle of the back: 60°
 Self Weight: 32kg
 Load bearing: 295kg
 Packing: 1pc/ctn
 Carton size: 201x64x30cm
 G.W. : 42kg



FYE021009
Stretcher for Ambulance Car

High Position(LxWxH):195x55x90cm
 Low Position(LxWxH):195x55x50cm
 Max. Angle of the back: 65°
 Max. Angle of the Knee Part: 15°
 Size of the Castors:Φ150mm
 Self Weight: 42Kg
 Load Bearing: 181Kg
 Packing: 1pc/200x63x41cm



FYE031001
Head Immobilize

Unfolded Size(LxWxH)
 40x26x16cm
 Self Weight: 1Kg
 Packing: 8pcs/54x45x63cm
 G.W.: 11Kgs



FYE031002
Head Immobilize

Unfolded Size(LxWxH)
 26x34x14cm
 Self Weight: 0.5Kg
 Packing: 10pcs/58x38x56cm
 G.W.: 8Kgs



FYE041001
Body Splint

Unfolded Size(LxW):82x71cm
 Self Weight: 3kg
 Packing: 2pcs/ctn
 Carton size: 86x28x19cm
 G.W.: 8kg



FYE041002
Fracture Fixation Splint

Self Weight: 3kg
 Packing: 2pcs/ctn
 Carton size: 75x34x20cm
 G.W.: 6kg



FYE041004
Air Splint

Self Weight: 1kg
 Packing: 8pcs/ctn
 Carton size: 52x28x25cm
 G.W.: 10kg



FYU131002 AED - Automated External Defibrillator with Low Energy BTE

Features

- Biphasic Truncated Exponential defibrillation with low energy and minimum myocardial injury
- Non rechargeable Li-MnO₂ battery with high capacity supporting up to 400 shocks
- Automatic recording of ECG data & around sounds throughout complete operating
- Preinstalled electrode pads with compatibility to both adult and child
- One step operating for cover open and power on at the same time
- Daily self test and automatic self test upon power on
- Available with adult mode and child mode
- Automatic voice guide throughout the complete operation
- Automatic indication of unit status
- Alarm for low battery capacity and change of new one
- Optional PC software for data retrieve and download



Specifications



ECG Analysis	8.5 second	Battery Pack	Non-rechargeable Li-MnO ₂ of 12V, 6Ah with lifetime of 4 years
Hi-Cap Charging	8 second	Shock Frequency	Up to 400 times
Shock Output	50J(child), 150J (adult)	Electrode Pad	Disposable and adhesive, Preinstalled, 3-years lifetime
Data Storage	Up to 90 minutes each for ECG data and around sounds	Voice Guide	Customized languages
Data Transfer Protocol	Bluetooth	Weight	2.3 Kg
Button Operating	Power, Shock	Warranty	2 Years
Standard Configuration	1 x main unit, 1x battery pads, 1 x electrode pads (2 pcs), 1 x carry case		
Optional Configuration	AED trainer, first aid kit, PC software, wall mount cabinet, standing cabinet		



FYE051001 LED Head Light

Material: ABS
10pcs LED Bulbs
Battery: 3*AAA (Didn't Contain)
Size: 72x65x49mm
Weight: 80g
Package: Double Hard Blister

FYE051002 LED Head Light

Material: ABS
COB Bulb With a Brightness Of 210 Lumens
Battery: 3*AAA (Didn't Contain)
Size: 67x45x42mm
Weight: 47g
Package: Double Hard Blister



FYE051003 LED Head Light

Material: ABS
COB Bulb With a Brightness Of 180 Lumens + 2 red Bulbs 3528 SMD
Battery: 500MA, Capacity 14500 Lithium Battery
Size: 68x38x35mm
Weight: 54g
Package: Kraft Paper Box With a 50cm Long Type-c USB Cable

FYE051004 LED Head Light

Material: ABS+PS
XG Bulb With a Brightness of 170 Lumens
Battery: 3*AAA (Didn't Contain)
Size: 68x32x43mm
Weight: 92g
Package: Double Hard Blister





Hospital Facility Series



**FYF011012
Hospital Bed**



3 Function Manual Bed
Net Metal Panel Foldable Aluminum Guardrail Powder Coating Steel Frame Detachable ABS Head and Foot Board
Pedal Locking Castor
Functions: Back-rest(0-70° ± 5°)
Over All Size: 212*98*45cm
Load Capacity: < 125KG

**FYF011003
Hospital Bed**



2 Function Manual Bed
Net Metal Panel Foldable Aluminum Guardrail Powder Coating Steel Frame Detachable ABS Head and Foot Board
Pedal Locking Castor
Functions: Back-rest(0-70° ± 5°); Leg-rest(0-30° ± 5°)
Over All Size: 212*96*45cm
Load Capacity: < 125KG

**FYF012017
Hospital Bed**



2 Function Electric Bed
 Material: Steel Framework, Top Class ABS&PP Plastic With Ventilation Holes Top Class PP&ABS Plastic,
 With Corner Bumper Collapsible 6 Columns Aluminum Alloy Protective Railing
 Central Brake Castor
 Functions: Back-rest(0-70°±5°); Leg-rest(0-40°±5°); Sitting part sinking (0-10°)
 Over All Size: 215*98.5*48cm
 Load Capacity: <250KG

**FYF021008
Hospital Bed**



1. Steel framework, detachable PP head & foot board
2. Over all dimension: 1880mm(L)*900mm(W)*1260mm(H)
Bed board dimension: 1775mm(L)*710mm(W)
3. Height: 575mm (Bed board to ground)
4. Sliding aluminum alloy protective railing
Rail dimension: 1775mm*570mm
Protective tube spacing less than 8cm
With three gears adjustable: 80mm/310mm/500mm
(Height from side rail to bed board)
5. Two functions controlled by cranks
Back-rest: 0 - 70°
Leg-rest: 0 - 45°
6. 4pcs universal castor, φ 125mm, individual brake
7. Net Weight: 101kg
8. Standard accessory: I.V. pole.

**FYF011014
Manual Transfer Stretcher**



1. A type of manual transfer stretcher. Single crank for height adjustment. Turn by clockwise, stretcher will be up; Turn by anti-clockwise, stretcher will be down.
2. Bright arrow symbols direct the user how to operate clearly.
3. Central-lock castors, diameter 150mm. Matched with direction castor under the chassis, help user easy control the stretcher direction.

4. Dimension:
Overall dimension: 2050*710mm(L*W)
Height adjustment (Bed board to ground): 875-570mm
Size of bed board: 1900*610mm(L*W)
Back rest tilting angles: 0°-35°
5. Drop-down protective railing, PP bed board produced by blowing molding.
6. Net Weight: 82kg
7. Standard accessories: Mattress, I.V. Pole.

**FYF021011
Baby Cart**



- SPECIFICATIONS :**
 Material : Steel framework, top class ABS & PP plastic, non-toxic odourless and environmentally friendly.
 Overall dimension : 1055mm(L)*625mm(W)*940mm(H)
 Bed board dimension : 890mm (L)*565mm(W)
 Height (from bed board to ground) : 665mm
 Rev. trendelenburg : 0 - 12°
 Net weight : 32KG
 Safe load capacity : 10KG
 Castors : 4pcs Swival castors, φ100mm (2 with brake, 2 without)
- FUNCTIONS :**
1. Rev. trendelenburg positions operated by gas spring lever help improve baby spit-up.
 2. 360° transparent side rails helps parents and caregivers observe the baby easily and create a safe area for the baby. Flip to open the side rails, which is convenient for caregivers. Additional small side rails inside protects the baby and keep safer.

I.V.Stand



FYF081007
Movable I.V. Stand



FYF081001
Infusion Stand



FYF081005
Base with ABS plastic, stainless pole



FYF081002 **FYF081003** **FYF081004**
Base with painting steel, stainless pole



FYF081006
Aluminum alloy transfusion supporter with elliptical orbit



FYF111003
Over Bed Table

1. Material:Aluminum alloy supporting column
PP table board :895mm*445mm
2. Height adjusted by gas spring
Hi-low range:945mm-660mm (Board to ground)
3. 4pcs universal castors,2pcs Φ 25mm,2pcs Φ 50mm
4. Packing:2sets/ctn/28kg/0.094CBM



FYF091001
Ward Screen
Size: 1500*1800mm



FYF101001
Case-history Folder
ABS, Size: 325x230mm



FYF041001
Bedside Cabinet

- 1.specification: 49cmx49cmx77cm
- 2.Packaging: 1PC Protective railing 0.19 CBM
- 3.Component:two towel hangers,a slide board,a drawer, partition board inside ,2pcs oddement hooks.



FYF041002
Bedside Cabinet

- 1.specification: 49cmx49cmx77cm
- 2.Packaging: 1PCS Protective railing 0.19 CBM
- 3.Component:two towel hangers, 2pcs oddement hooksa slide board, a drawer,partition board inside,castors(PVC plastic)

Color

A	B	C	D
---	---	---	---



FYF041006
Bedside Cabinet

- 1.specification: 53cmx52cmx72cm
- 2.Packaging: 1PC Protective railing 0.20 CBM
- 3.Component:two towel hangers at both side, 2pcs oddement hooksa slide board,a drawer, the body material is Iron,castors(PVC).

Laundry Collecting Trolley



FYF071001
Emergency Trolley

1. Two castors with locking brake, two without
 2. Two smaller drawers, two medium size drawers, and a big drawer
 3. Buckets and I.V Pole are adjustable
- Specification: 850x520x1010mm
0.66CBM



FYF071027
Anesthesia Trolley

Material: Aluminum-Alloy, ABS Plastic and Stainless steel
4pcs universal castors, Φ 100mm, 2 with brake, 2 without
Size: 673x480x920mm



FYF071009
Size: 58.8x42.8x89cm



FYF071010
Size: 80x59x89cm



FYF071011
Size: 10.05x54x93.6cm

HOSPITAL TROLLEY



FYF073001
Specification(mm): 650x450x900

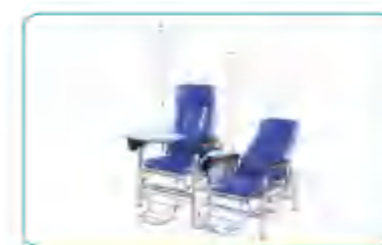


FYF071025
Stainless steel two arm lifting tray rack
Specifications: 650x430x940/1400mm



FYF073034
Specifications: 660x440x850mm

HOSPITAL CHAIR



FYF061002
Stainless Steel Transfusion Chair
Specification(cm): 60x77x108
Packing Size (cm): 90x63x35
Description: 3 angles adjustable
Net Weight: 19KG



FYF062002
Stainless Steel Accompanier's Chair
Specification(cm): 62x61x42
Stretch Size(cm): 62x188x58
Packing Size (cm): 120x66x21
Description: The fabric is pressed PVC artificial leather
Net Weight: 17KG



FYF071003
Cure Trolley

2 layers of big drug trays
Size: 815x580x885mm
1 I.V. Pole with 8 hooks, providing functional use of bottle and goods hanging
4pcs universal castors, 2 with brake, 2 without

FYF071028
IV Treatment Trolley

Material: Aluminum-Alloy, ABS Plastic and Stainless steel
Size: 720x475x920mm



FYF071026
50-Shelf Case History Trolley



FYF064001
Recliner Chair

Size(chair):110×66×118cm
table size :65×38cm
1pc/Carton Size:95×70×72cm
N.W.:40kg G.W.:46kg
5" castor (omni-directional rear caster with brakes)
Weight limit: 120KG
Color:Blue/Red/Jade



FYF064003
Recliner Chair

Size(chair): 140×73×118cm
Table Size : 65×38cm
5" castor (omni-directional rear caster with brakes)
Weight Limit: 120KG
Color: blue/red/jade
1pc/Carton Size: 74×94×72cm
N.W.: 45kg
G.W.: 50kg



FYF064002
Recliner Chair

Size(chair):110×77×128cm
Table Size : 48×26cm
5" castor (omni-directional four caster with brakes)
Weight Limit: 120KG
Color: blue/red/jade
1pc/Carton Size: 97×82×75cm
N.W.: 44kg
G.W.: 50kg



FYF064004
Dialysis Chair

Material:Painted Steel PVC Leather, with I.V pole ,
with headrest and foot step
Size(open):180×88×60cm,
1pc/Carton Size:153×81×66cm
N.W.:62kg G.W. :72kg
4" castor all with brakesweight
Limit: 200KG

FYF051002

Bedsore Prevention Air Mattress



Appearance	Bubble type
Gas circuits numbers	2
Color of air pump back shell	Dark grey
L*W*H(mm)	187±8×90±5×7±1
Operating mode of air pump	Alternative
Rotary valve motor R.P.M 4W CW	1/5.1/6
Inflating time(mm)	3
Deflating time(min)	3
Exchanging time(min)	6

The bubble-type alternative mattress is made of non-toxic PVC with nylon fabric, Characteristics of the alternative pump.

1. Low-noise design. The operating noise does not exceed 45dB(A).
2. Safe round edge design.
3. Simple and lucid adjustment button.
4. Air pump is provided with hanger at the backside, which may save space.
5. Air charging pressure at the outlet of air pump is adjustable, maxmum pressure $\geq 12\text{kPa}$. Under the maximum operating load, the maximum pressure of mattress $\geq 4\text{kPa}$.
6. Maximum flow of air pump $\geq 4.5\text{L/min}$.

FYF051001

Bedsore Prevention Air Mattress



The strip-type alternative mattress is made of non-toxic PVC with nylon fabric, There are 18 interchangeable tube

1. Low-noise design. The operating noise does not exceed 45dB(A).
2. Safe round edge design.
3. Simple and lucid adjustment button.
4. Air pump is provided with hanger at the backside, which may save space.
5. Air charging pressure at the outlet of air pump is adjustable, maximum pressure $\geq 12\text{kPa}$. Under the maximum operating load, the maximum pressure of mattress $\geq 4\text{kPa}$.
6. Maximum flow of air pump $\geq 4.5\text{L/min}$.

Appearance	Strip type
Gas circuits numbers	2
Color of air pump back shell	Dark green
L*W*H(mm)	198±8×90±5×11±1
Operating mode of air pump	Alternative
Rotary valve motor R.P.M 4W CW	1/10.1/12
Inflating time(mm)	6
Deflating time(min)	6
Exchanging time(min)	12



FYF131010

Oxygen Regulator

Input thread:BS341-3
 Working pressure :15MPa/150bar/ 2250psi
 Flow range :1-15L/min(optional: 8L/10L/15L/20Lmin)
 Capacity of humidifier :170ml/DISS1240
 Product description: Oxygen inhaled manufacturing expert
 According to Each country standards
 Humidifier for autoclave
 Metal connecting parts
 Stainless steel valve needle

FYF131011

Oxygen Regulator

Input thread:US CGA540
 Working pressure :2250psi
 Flow range :2-15L/min
 Capacity of humidifier :200ml/350ml/500ml
 Product description: Diaphragm type,Brass body,
 Flat pressure curve,For medical use





Hospital Equipment Series

FYU041010 Compressor Nebulizer

Specification
 Type: Compressor
 Nebulization Rate: ≥0.2mL/min
 Residual Volume: ≤ 1.0mL
 Sound Level: ≤65dB
 Gas Flow Volume Rate: ≥4.5L/min
 Particle Size(MMAD): 3μm ± 25%
 Operating Condition: Intermittent operation 20 min. ON/40 min. OFF
 Unit dimension: 268×157×105mm
 Unit weight: 1554g
 Power Connection Mode: Power Cord
 Power Supply: AC 220V
 Accessory Storage: Yes
 Power Cord Storage: Yes



FYU041011 Compressor Nebulizer

Specification
 Type: Compressor
 Nebulization Rate: ≥0.2mL/min
 Residual Volume: ≤ 1.0mL
 Sound Level: ≤65dB
 Gas Flow Volume Rate: ≥4.5L/min
 Particle Size(MMAD): 3μm ± 25%
 Operating Condition: Intermittent operation 20 min. ON/40 min. OFF
 Unit dimension: 268×157×105mm
 Unit weight: 1554g
 Power Connection Mode: Power Cord
 Power Supply: AC 220V
 Accessory Storage: Yes
 Power Cord Storage: Yes



FYU041012 Compressor Nebulizer

Specification
 Type: Compressor
 Nebulization Rate: ≥0.2mL/min
 Residual Volume: ≤ 1.0mL
 Sound Level: ≤65dB
 Gas Flow Volume Rate: ≥4.5L/min
 Particle Size(MMAD): 3μm ± 25%
 Operating Condition: Intermittent operation 20 min. ON/40 min. OFF
 Unit dimension: 246×122×149mm
 Unit weight: 1413.4g
 Power Connection Mode: Power Cord
 Power Supply: AC 220V
 Accessory Storage: Yes
 Power Cord Storage: Yes



FYU041007 Compressor Nebulizer

This is a high-performance compressor nebulizer, with a low noise level and easy to use. The high performance compressor is suitable for continuous use and has a 2000+ hours non-stop service life.

Specification
 LifeInput: 220V/50HZ; 120V/60HZ
 Power Consumption: 65W
 Medication Capacity: 6~8ml
 Particle Size: Respirable Fraction 0.5 to 5μm 0.5μm80%
 MMAD: 3-5μm
 Average Nebulization Rate: Above 0.3ml/min
 HandleNoise Level: Below 60 dBA
 Compressor Pressure Range: 30-45 Psi
 Operation Pressure Range: 12-14.5 Psi(0.85~1.1 bar)
 Liter Flow Range: 8-10 lpm
 Cable Storage Case
 Box size (mm): 200×110×340
 Carton Size (mm): 460×205×700/8pcs





FYU041004 Ultrasonic Nebulizer

The ultrasonic nebulizer can nebulize the hydrosolvent drug into very fine particles that can be directly inhaled and exert an effect on the lesions of lungs, which is a common medical device in the units of hospital, such as Internal Medicine, Department of Surgery, Department of Pediatrics, Department of Dermatology and Health Care Hospitals, Nursing Homes, Sanatoriums, etc.

Specification
 Power Supply: AC220V±22V/110V±11V, 50Hz/60Hz±1Hz
 Input power:45VA
 Operating frequency: 1.70MHz±10%
 Maximum nebulization rate: >3mL/min
 Timing range: 0~60min Stepless adjustable
 Continuous working hours: >4h
 Water capacity of sink: >300mL (water line by visual inspection)
 Maximum loading of small nebulizing cup: 150mL
 Maximum loading of big nebulizing cup: 350mL
 Noise: <50dB(A)
 Water temperature in the nebulizing cup: <60°C
 Tiny particle size: 1µm~5µm



FYU041015 Ultrasonic Type (Mesh)

Portable size nebulizer, powered by AA battery or adapter, is a basic mesh nebulizer with reliable quality, soundless operation and enhanced cleaning mode for mesh maintenance.

Specification
 Ultrasonic Frequency: Approx. 110 kHz
 Power Supply: 2× AA batteries or Adapter (5V, 1A)
 Rated Power: <3W MMAD: Approx. 3.5 µm
 FPF: Approx. 80% Nebulizing Rate: ≥0.2 ml/min
 Nebulizing Head Life:180 hours
 Battery Life: 90 mins(2 AA Alkaline Batteries)
 Max./Min. Liquid Volume: 8ml/0.5ml
 Automatic shutdown without liquid
 Weight: 90g
 Device Size (mm): 98*73*45
 Accessories: adultmask or child mask, inhalation mouthpiece, bag, USB Type-C cable



FYU041016 Wearable Mesh Nebulizer

Specification
 Power Source: 2xAA batteries / USB cable
 Power Consumption: 2W
 Capacity of Medication Bottle: Max 8ml
 Particle Size: MMAD < 5µm
 Nebulization Rate: > 0.2ml/min
 Dimension:50(W)*150(H)*30(D)mm
 Weight:approx.Approx. 11g (medicine cup)
 Standard package: 1× main unit + 1 x medicine cup + 1× adult mask + 1× child mask+1 carrying bag
 Optional: medicine cup / battery case /2× AA battery
 Cell phone connector: Type-C / Lightling

FYU071001 High Frequency Mobile X-ray Equipment



Item	Parameters
Output Power	5 KW
Frequency	50KHz
Tube Voltage	40-120 KV
Power Supply	AC/DC 220V 50/60Hz
Operation Method	Wire/Wireless control

1. Equipped with a built-in rechargeable battery can be operated form battery and mains powers, suitable for making radiography for all body parts and at any time.
2. Creative designing make much less weight and much smaller volume than any other similar ones.
3. Unique locating mode and swift radiography capacity provide perfect and handy operating.
4. Precise and effortless adjustmet of counterbalanced tube arm and rotatable tube head.

FYU071002 High Frequency Mobile Digital C-arm System

Item	Parameters
Output Power	5 KW
Dual-focus	Small focus:0.3;Large focus:1.5
Inverter Frequency	40 KHz
Flourosopic type	Automatic,manual,pulse
Tube voltage	40-120 KV
Tube current	0.3-30 mA



- 1.Mega pixel CCD camera amd high resolution image chain system for excellent image quality.
- 2.Pulse fluoroscopy function can realize optimized, low-dose and real - time imaging.
- 3.Disetinctive design and user - friendly operation thanks to the counterbalanced design of the C - arm.
- 4.Unique Image software processing system and standard DICOM interface can integrote into the clinical network.

FYU061001

PC Platform Full-digital Black And White Ultrasound Diagnostic System

High End B/W ultrasound
 Monitor: 15 inch LED medical display
 Operation system : windows
 Hard disk ≥ 128G
 full-screen function
 Rich measurements and calculation softwares for different applications
 Equipment Applications: Mainly used for examination of organs such as abdomen, reproductive system, urinary system, etc.
 Options: Convex probe/ Linear probe/ Transvaginal probe /



Part of the probe display



Convex probe
 Application: Abdomen, Obstetrics, Gynecology



Linear probe
 Application: Small Parts, Vascular, Musculoskeletal



Trans-rectal probe
 Application: prostate gland



Micro-convex probe
 Application: Small parts, baby organs



Trans-vaginal probe
 Application: Obstetrics, Gynecology, Urology

FYU061002

Trolley Color Ultrasonic Diagnostic Apparatus

21.5" LED screen
 13.3" touch screen
 4D/5D imaging
 Automatic Image Optimization
 4 probe connectors
 Complete application software packages
 Auto PW trace measurement
 Trapezoidal imaging
 4D, DLIVE function
 Clinical Applications: Abdomen, Pediatrics, Cardiology, Gynecology, Urology, Obstetrics, Vascular, etc.



Size: Universal

Showing Optional Probes



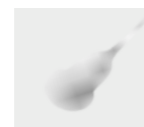
Convex probe
 Abdomen, obstetrics, gynecology



Linear probe
 Small Parts, Vascular, Musculoskeletal



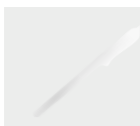
Phased array probe
 Heart and chambers, cardiac function, pericardia, effusion



4D-volume probe
 Fetal



Trans-vaginal probe
 Obstetrics, gynecology, urology



Trans-rectal probe
 Prostate gland



Micro-convex probe
 Small parts, baby organs



FYU031001 Electric Suction Apparatus

Mains: AC 220V ± 10% 50Hz
 Pump Structure: Oil-Free Self-Lubricating Pump
 Air Pumping Efficiency: ≥ 15L/min
 Limit of Negative Pressure: ≥ 0.08MPa
 Adjustment Range of Negative Pressure: 0.013MPa ~ 0.08MPa
 Input Power: 150VA
 Liquid Vessel: 1000ml
 Noise Level: ≤ 55dB



FYU031005 Electric Sputum Suction Device

Mains: AC 220V ± 10% 50Hz
 Pump structure: oil-free pump
 Negative pressure: ≥ 0.07MPa
 Air pumping efficiency: ≥ 15L/min
 Adjustment range of negative pressure: 0.013MPa ~ 0.07MPa
 Input power: 150VA
 Noise level: ≤ 55dB
 Liquid vessel: 1000ml

FYU101003 Infant Incubator

Specification

Power requirement: AC220V-230V/50Hz or AC110-120V/50-60Hz, 850VA
 Control Modes: Air mode and Baby mode controlled by microcomputer
 Control range of air temperature: 25°C - 37°C (override mode: 37°C - 39°C is optional)
 Control range of baby temperature: 34°C - 37°C (override mode: 37°C - 38°C is optional)
 Accuracy of skin temperature sensor: ± 0.2°C
 The temperature fluctuation range between incubator temperature and average incubator temperature (Under stable temperature condition): < 0.5°C
 Uniformity of temperature: < 0.8°C (mattress is on the horizontal position)
 Inclination of the bassinet: ± 12°
 Noise inside hood: < 45dB(A)
 Failure alarm: over temperature alarm, deviation alarm, sensor failure alarm, fan motor alarm, power failure alarm, system alarm and so on.
 Accuracy of weight display: ± 1% (equipped weighing system)



Disposable NIBP Cuffs



FYUP01006
(Non-woven)



FYUP01001
(PU)



FYUP05001
Adult ECG Clips



FYUP05002
Child ECG Clips



Electrode Ball Bulb Suction
FYUP05003 Adult
FYUP05004 Child

FYU101001 Chair-Mounted Dental Unit

Configurations

24V DC motor for chair (safety system)
Auto spittoon flushing and cup filler control system
9 programs inter-lock control system
(Integrated circuit board / USB cable connection)
Down-mounted Instrument tray (with air break/interlock)
Water / gas / electric master switch (One key)
Handpiece holder / assistant rack quick connection hose
Glass spittoon (Quick detachable)
Double articulate headrest
Sewed ECO-leather cushion
Round foot switch
4-way joystick
(control patient chair go up/down/front/back)
High suction and saliva ejector system
Outer water tank
LED-9 operation light
(adjustable color temperature/illuminance)
LED film viewer
3-way syringe (hot/cold)
External/built-in floor box
ST-603 doctor stool
Technical Parameter
Power Requirements: AC 220V, 50Hz/60Hz, 400VA, earth (electric connection)
Gas Requirements: pressure 0.6-0.8MPa, volumes > 80L/min
Water Requirements: pressure \approx 0.2MPa, volumes > 10L/min



FYU051007 3 Channel ECG Machine

Intelligent simulated inflation with auto adjustment
3/2, 3/2+1, 3/3, 3/3+1 channel printout format
Simultaneous 12 lead acquisition
Color LCD with touch screen to display ECG waveform, setting menu and operating status
EMG filter of 25/35/45/75/100Hz (-3dB) and CMRR of 100dB
Automatic measurement and interpretation of ECG parameters
Lead off detection and display on the screen
Single channel 60s compressed record
Rhythm analysis with R-R histogram and trend chart
200 exams to be stored in memory
Able to enter patient into of ID, sex, age & weight
Paper size of 80mmx20m, roller type/Z-folding
Built in rechargeable Lithium battery supporting 100 exams



FYU051006 12 Channel ECG Machine

10.1 inch (1024x600) color TFT LCD with touch screen.
Rapid preview of ECG waveform before printing.
ECG algorithm certified by AHA/MIT/CSE database & 30 year application.
Particular ECG analysis as per age difference.
One touch operation via touch screen or key strike.
Compatible with external VGA, PC keyboard, mouse, bar code scanner.
Seamless connection with HIS.
WiFi/LAN connection for data transmission via ftp.
Data output in format of FDA-XML, DICOM, DAT, BMP, JPG, SCP.



FYU011003

Multi-parameter Patient Monitor



1. New SpO₂ technology to assure precise measurement.
2. Effective SpO₂ measurement in case of low perfusion and finger motion.
3. Digital filter to guarantee application in ICU, CCU and /or evil environment.
4. High efficient power management without electric fan to avoid cross contamination.
5. Standard configuration of ECG, NIBP, SpO₂, TEMP, RESP, HR, PR.
6. Optional configuration of touch screen, HDMI output, LAN/WiFi connection, 1/2 channel IBP, thermal recorder, EtCO₂, Nellcor SpO₂ module, Sun Tech blood pressure module.

FYU011004

Multi-parameter Patient Monitor



1. Simultaneous display of 7 lead ECG waveform.
2. Indented menu layout to maximize the space for display.
3. Complete isolating circuit for protection against defibrillation and ESU interference.
4. New SpO₂ technology to assure precise measurement.
5. Effective SpO₂ measurement in case of low perfusion and finger motion.
6. Able to analyze 13 kinds of arrhythmia and 15 kinds of drug level.
7. Digital filter to guarantee application in ICU, CCU and /or evil environment.
8. High efficient power management without electric fan to avoid cross contamination.
9. Standard configuration of ECG, NIBP, SpO₂, TEMP, RESP, HR, PR.
10. Optional configuration of touch screen, HDMI output, LAN/WiFi connection, 1/2 channel IBP, thermal recorder, EtCO₂, Nellcor SpO₂ module, Sun Tech blood pressure module.



FYU101002

Transport Incubator

Standard Configure:

Temperature controller, Humidity system(optional), oxygen infusion(optional), Infant bed, integrated sensor box, X-ray cassette frame, humidity water tank, I.V. Pole, tray, air filter, lift stand.

Technical Specification:

Power Supply: AC220V-230V/50Hz or AC110-120V/50-60Hz, 1300VA
Air temperature control range: 25°C-37°C (override mode 37°C-39°C)
Baby temperature control range: 34°C-37°C (override mode 37°C-38°C)
Accuracy of skin temperature sensor: $\pm 0.2^{\circ}\text{C}$
The temperature fluctuation range between incubator temperature and average incubator temperature (under stable temperature condition): $\leq 0.5^{\circ}\text{C}$
Temperature uniformity: $\leq 0.8^{\circ}\text{C}$ (mattress is on the horizontal position)
Inclination of the bassinets: $\pm 8^{\circ}$
Noise inside hood: $\leq 45\text{dB(A)}$
Humidity display range: 0%RH~99%RH
Indication range of oxygen concentration: 0%~99%
Weighing Range: 100-8000g (weighing system is optional)
Package:
Gross weight: main body 70kg/Cabinet 60kg
Net Weight: Main body 59kg/Cabinet 50 kg
Measurement(mm): Main body: 1100x707x888mm
Cabinet: 1029x697x831mm

FYU111002

Infant Radiant Warmer

Specification

Power requirement: AC220V-230V/50Hz or AC110-120V/50-60Hz, 600VA
Control Mode: Pre-warm Mode, Manual Mode and Baby Mode are controlled by micro-computer
Baby Mode temperature control range: 34.5-37.5°C
Temperature sensor display range: 5°C-65°C
Accuracy of skin temperature sensor: $\pm 0.2^{\circ}\text{C}$
Temperature uniformity of mattress: $< 2^{\circ}\text{C}$
Angle of heater head: 0°-90° any angle for two ways
Inclination of the bassinets: three tilt position
APGAR timer: audible and visible alarm when the device runs to 50"~1', 4'50"~5', 9'50"~10'
Failure alarm: over temperature alarm, deviation alarm, sensor failure alarm, power failure alarm, setting alarm, checking alarm and so on.



FYU111003

Infant Radiant Warmer

Specification

Power input requirement: AC220V~230V/50Hz, 750VA
Temperature Control Mode: Pre-warm mode, Manual mode, Baby mode
Baby mode temperature control range: 34.5°C-37.5°C
Skin temperature display range: 5°C-65°C
Accuracy of skin temperature sensor: within $\pm 0.2^{\circ}\text{C}$
Skin temperature control accuracy: $\leq 0.5^{\circ}\text{C}$
Temperature uniformity of mattress: $\leq 2^{\circ}\text{C}$
Inclination of the bassinets: $\pm 12^{\circ}$ Stepless Adjustment
APGAR timer: audible and visible alarm will be activated when the equipment runs to 50"~1', 4'50"~5', 9'50"~10'
Failure alarm: Power failure alarm, set alarm, check alarm, sensor alarm, temperature over alarm, deviation alarm, system error alarm, pulse oximeter alarm, pulse rate high alarm limit, pulse rate low alarm limit, SpO₂ high alarm limit, SpO₂ low alarm limit, system reminder alarm, single gas source fault alarm, low pressure alarm.



**FYU121004
Neonate Bilirubin
Phototherapy Equipment**

Specification
 Power requirement: AC220V-230V/50Hz or AC110-120V/50-60Hz, 75VA
 Light source: Blue LED
 Peak spectrum of radiant light resource: 465nm
 The total spectral irradiance on the effective surface area: $\geq 3.7\text{mW/cm}^2$ at a distance of 40cm
 Average value general bilirubin radiation on the effective surface area: $\geq 38\text{uW/cm}^2/\text{nm}$
 (for mobile XHZ-90L) $\geq 20\text{uW/cm}^2/\text{nm}$ (for fixed XHZ-90L)
 Uniformity of the total irradiance for bilirubin: > 0.4
 Dominant wavelength of blue light: 420-470nm
 Lifetime of LED: 20000hrs
 Adjustable range for the radiation angle of lamp module: 0-60°up from horizontal(Only for Mobile model)
 Adjustable range for the height of lamp module: 1350mm~1650mm (Only for Mobile model)
 Built-in timer range: 0~99999.9 hrs



**FYU121005
Neonate Bilirubin
Phototherapy Equipment**

Focus on details, more humanized user experience
 Visual alarm: 360 visual alarm light can observe the alarm information in all directions;
 VHA stand: the height of the bed can be adjusted freely while operating to meet the operating needs of medical staff of different heights;
 Observation side window: the large brown observation side window is convenient for observing the treatment status of the child and reduces the blue light damage to the nursing staff;
 Web mattress: Light-transmitting web mattress, soft and comfortable to touch, good air permeability for infant skin, while not affecting the effect of radiation treatment;
 RS232: connector to support data transmission.



FYS11008 LED Operation Lamp

1. Nano coating and die-cast aluminum enclosure creating a streamlined excellent cooling effect.
2. Intelligent touch control screen.
3. The removable handle sheath can be cleaned and disinfected.
4. The no welding titanium alloy arm, imported spring arm is lifted and lowered easily and freely.
5. The imported switch power supply is adopted to control the voltage, making the working voltage permanently stable.
6. Adjustable temperature, R9 features that enhance the red color rendering index.
7. With the function of minimally invasive lighting and brain surgery lighting.
8. LED shadowless lamp life expectancy long (50000 h).



Diameter of lighthouse (cm)	Combined type
Illumination at 1m (lux)	80000-160000
Light field diameter 1m (cm)	20-28
D10 (mm)	180±40
Diameter of spot D50 (mm)	110±35
L1+L2 Depth of illumination (cm)	150
Color rendering index (Ra)	100≥Ra≥85
Optional color temperature (K)	6700K≥Tc≥3000K
Number of LEDs	72
Average bulb life (hours)	50000h
Heat-to-light ration (mW/m2lx)	<6
Working distance (cm)	70-140
Power supply	100-240V 50/60Hz
Input power (VA)	180
Ceiling height for installation (cm)	270-320



Illumination at 1m (lux)	160000
Illumination at 1m on Endo model (lux)	15000
Light field diameter D10 mm	180±40
D50mm	110±35
Depth of illumination L1+L2mm	150
Color rendering index (Ra)	100≥Ra≥85
Red color index R9	R9≥R7
Optional color temperature (K)	6700K≥Tc≥3500K
Number of LEDs	84
Average bulb life (hours)	50000h
Heat-to-light ration (mW/m2lx)	<6
Power supply	110-240V
Input power (VA)	150W
Ceiling height for installation (cm)	2.7-3.2m
R13	≥99
R15	≥98

FYS011010 LED Operation Lamp

1. Imported LED cold light source is adopted, with the ultra-thin optical lens.
2. Digital means are adopted for stepless regulation of LED brightness.
3. Light field size can be adjusted by the handle.
4. The removable handle sheath can be disinfected.
5. The service life of LED shadowless lamp is long (50000h).
6. Color temp can be adjusted in three steps.
7. The imported switch power supply is adopted to control the voltage, making the work voltage permanently stable.
8. The no welding titanium alloy arm, Imported spring arm make sure the lamp head adjusted easily and freely

FYS011005 Shadowless Operation Lamp

Technical Specification:
 12-reflector shadowless lamp
 Illumination Lx: 160000≥Ec≥1200000
 Color temperature(K): 4000±500
 Color Rendering index(Ra): 100≥Ra≥85
 Rated voltage of bulb: AC 24C
 Rated Power of bulb: 300W
 Input power: 350VA
 Power supply: AC220±10%, 50HZ



FYS011006 Shadowless Operation Lamp

Technical Specification:
 Major&Auxiliary luminescence shadowless lamp
 Illumination Lx: Main lamp 160000≥Ec≥1200000Lx
 Supplementary lamp 160000≥Ec≥50000Lx
 Color temperature(K): 4000±500
 Color Rendering index(Ra): 100≥Ra≥85
 Rated voltage of bulb: AC 24
 Rated Power of bulb: 425W
 Input power: 500VA
 Power supply: AC220±10%, 50HZ



FYS011012 LED Examination Lamp

Illumination (lux)	≥60000
Color Temperature (K)	4500±500
Input power (VA)	20
CRI	100≥Ra≥85
Tilt left and right	160°
Tilt front and back	190°
Spring arm adjusted	≥600

1. An imported LED cold light source is adopted as operation lighting. As a genuine cold light source.
2. The LED shadowless lamp is pure-DC power supplied, without any strobe or harmonic.
3. The service life of LED shadowless lamp is long (50,000 h).
4. LED has high luminous efficiency and it is impact-resistant and strong to resist crumbling.
5. Without mercury contamination. The light it sends contains no infra-red or ultraviolet radiation pollution.
6. The unique design of the spring arm.



FYS021002

Gynecological Table

This type gynecological table is suitable for conducting gynecological surgery, operative abortion and gynecological examination, etc by medical unit.

Features:

Unique profile design which is beautiful and elegant.

Foot step hydraulic elevating and various actions are controlled by pneumatic.

Imported Y type sealing ring with good sealing performance and is durable.

Whole stainless steel hidden auxiliary table with flexible extension and retraction

Foot treadle brake device which is easy for moving operating table.

Technical specification:

Table length:1330±50mm

Table width:550±30mm

Auxiliary table:340mmx460m(±20mm)

Back board fold upward:75°

Forward inclining of the plattform:≥17°

Backward inclining of the plattform:≥17°

Back board fold upward:≥70°

Table at the lowest level:≤650mm

Table elevating stroke:≥250mm

Auxiliary table stroke:≥500mm

Accessories:

A pair of leg support frame

A stainless steel sewage basin

A pair of armrest



FYS021003

Colligated Delivery Bed

Technical Specification:

Length:1900±50mm

Width:600±10mm

Maximum and minimum height of the platform : 650±100mm

Length and width of auxiliary table:

Length:520mm

Width:500mm

Up and down:≥300mm

Forward:≥10°

Backward:≥15°

Back board fold upward:≥60°

Main Voltage:AC 220V 50Hz

Power:150VA



FYS021001

Electrical Operating Table

Technical Specification:

Table Length mm	2000±100
Table Width mm	520±20
Height Adjustment mm	(750 ~ 1000)±50
Horizontal and longitudinal movement mm	350±30
Backboard Upwards	≥70°
Backboard Downwards	≥15°
Trendelenburg/Rev - Trend	≥18°
Tilt(Left)/ Tilt(Right)	≥15°
Head board Upwards	≥40°
Head board Downwards	≥90°
Leg board Upwards/Leg board Downwards	≥15°/≥90°
Leg board Outwards	≥180°
Waist board lifting mm	100±20
Lumbar upper corner "Λ"	≤150°
Lumbar lower corner "V"	≤120°
Main Voltage AC	220V±22V, 50Hz±1Hz
Input Power VA	300±10%



Model Series

Adult Heart Model Human Skeleton Model



FYM011001
Adult Heart Model

Size:life size,2 parts
Material:PVC



FYM011002
Human Skeleton Mod

Features:
The model show all the anatomic details of skeleton structure.
Joint and upper,lower extremities is removable.

Size:180cm
Material:advanced PVC
Package size:97x45.5x28cm
G.W.:14kg

FYM011015
Standard Acupuncture Model (60CM)

Features:These Chinese acupuncture models are ideal teaching aids. Each is carefully labeled with the appropriate pressure point and meridians of the ancient healing art. Made of soft PVC plastic and mounted on a handsome wooden stand.

Dual-sex Torso-27 Parts Basic Nursing Manikin



FYM011008
Dual-sex Torso-27 Parts

Size:85cm
Material:PVC

FYM011009
Basic Nursing Manikin

Features:
1,Oxygen inhalation
2,Nasal feeding
3,Gastrolavage
4,Duodenal drainage
5,Esophageal and gastric balloon
6,Deltoid subcutaneous injection
7,Subcutaneous puncture
8,Venipuncture,injection,blood transfusion(ARM)
9,Male/female urethral catheterization
11,Gauze drainage can be practiced in the fistula of wound.



Median Section of Male (Female) Pelvis Model

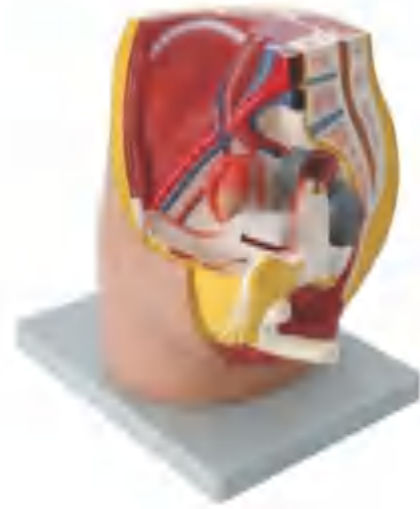


FYM011010
Median Section of Male Pelvis Model

Size: life size, 4 parts
Material: PVC

FYM011012
Median Section of Female Pelvis Model

Size: life size, 4 parts
Material: PVC



FYM011013
Eyes Model-6parts

Size: 3 times magnified, 6 parts
Material: PVC



FYM011016
Injection Training Module / Injection Pad

Size: 8.4x7.5x3.5cm

Foyomed[®]

*Other
Series*

For your smile

Tel: 0086-574-81877257 Fax: 0086-574-81877057
<http://www.foyomed.com> www.foyocare.com



FYO011001
Air Thermometer



FYO021001
Bath Thermometer

FYO012001
Indoor Temperature & Humidity

Temperature range: -30~50°C
Humidity range: 10~100%
Temperature tolerance: ±2°C
Humidity tolerance: ±5%(40%RH~80%RH)
Product Size: 26.67×26.67mm
Material: PC and Glass



FYO012002
WiFi Temperature & Humidity

Indoor Temperature range: -10~70°C/14~158°F
Outdoor Temperature range: -40~70°C/-40~158°F
Temperature tolerance: ±1°C (-10-50°C)/1.8°F (14-122°F);
±2°C/3.6°F (other)
Humidity range: 10~99%
Humidity tolerance: ±5%(40%RH~70%RH), other±8%RH
Indoor Temperature Refresh rate: 5s
Outdoor Temperature Refresh rate: 60s
Indoor Base Station Size: 109×83×20.8mm
Outdoor Remote Sensor Size: 80.3×58.7×15mm
WIFI Transmission range up to 99 ft / 30M
(range maybe shorter based on interference present)
Material: PC alloy
Power: 2 X AAA 1.5V



Portable Refrigerator

Features

1. The storage container can keep content cooling up to 24 hours.
2. Insulation material is PU CFC-free polyurethane.
3. Made of environmental PP material, food grade, non-toxic.
4. Storage container is durable for vaccine storage, blood products storage, dry ice storage, frozen specimen storage etc.



FYO031001



FYO031004



FYO031005



FYO031006



FYO031008



FYO031010



FYOP03001

Technical Parameters

Model	FYO031001	FYO031004	FYO031005	FYO031006	FYO031008	FYO031010
External Size(W*D*H)mm	340*230*280	420*240*300	440*300*340	440*270*310	520*310*365	610*400*420
Internal Size(W*D*H)mm	240*145*180	330*180*225	350*220*250	375*215*245	485*225*255	530*325*335
Capacity	6L	12L	17L	20L	33L	54L
Temp. Range	2C~8C					
Storage Time(Ambient 30°C)	12~48H					
Material	PE+PP+PU					
Ice Vessels	400g*4	400g*4	1000g*2	400g*6	900g*6	1500g*4
Optional Accessory	LED display thermometer					